

Have you got a rabbit problem?

DIY PROPERTY INSPECTION: WHERE TO LOOK

Rabbits have areas where they feed and places where they shelter. Simplify your search by focusing on the spots they like to use.

Top tips:

- When disturbed, rabbits usually run to the nearest cover or their actual “home”.
- Rabbits prefer to dig burrows in the ground, but this can take time depending on soil type. Burrows enable successful breeding.
- In the absence of burrows, rabbits will go under things that offer them protection from predators.
- Rabbits are often found around manmade structures or disturbed habitat.
- Removing breeding places often requires:
 - ◊ Burning or removing log piles or rubbish piles
 - ◊ Raising materials off the ground
 - ◊ Using barriers such as wire netting to block rabbits from getting under things.
- Removing breeding places is the responsibility of landholders.



In rubbish piles



Under log piles



In mounds of soil
mixed with timber



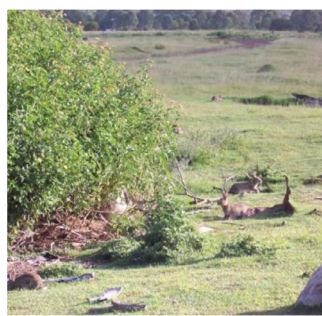
Under low-set buildings



Under concrete slabs



Under shipping containers



In weeds like lantana
and boxthorn



Along creek banks

Have you got a rabbit problem?

DIY PROPERTY INSPECTION: WHERE TO LOOK



In soft soil



In crusher dust



In contour banks



In haystacks



Under materials stored on the ground



In low shrubby gardens



In long grass like 'African lovegrass'



In loading ramps